

# Sister Yvonne Gellise Fund For Permanent Supportive Housing Services

AN ENDOWMENT TO SUSTAIN AN END TO HOMELESSNESS IN WASHTENAW COUNTY

## THE FUND

The SYG Fund was established to create lasting solutions to homelessness in Washtenaw County. In partnership with federal and local efforts, the fund focuses on permanent, supportive services to sustain housing for those who are most in need.

## THE NEED

In Washtenaw County in 2020, nearly 2,800 people were homeless and sought emergency shelter. Thousands more struggled with unstable housing, and were considered at-imminent-risk of homelessness, doubled-up, or precariously housed.

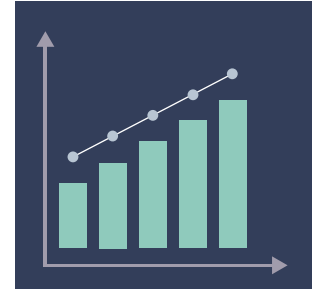
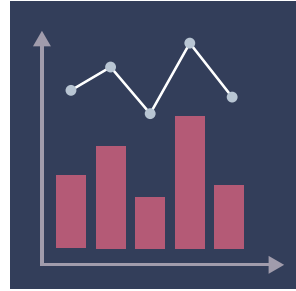
Of the individuals and families who were homeless, about 20% of those were considered chronically homeless, meaning they:

- have experienced long-term homelessness and live with a disabling condition (physical disability, mental health condition, and/or a substance use disorder)
- are extremely low-income, earning less than 30% of the Area Median Income (AMI) - or \$21,350 for a 1-person household
- need permanent supportive housing, an intervention that provides long-term affordable housing paired with on-going supportive services

## WHY AN ENDOWMENT?

Agencies that provide permanent supportive housing services in Washtenaw County face an annual challenge of raising funds to provide services within a risky and uncertain funding landscape, such as an economic downturn.

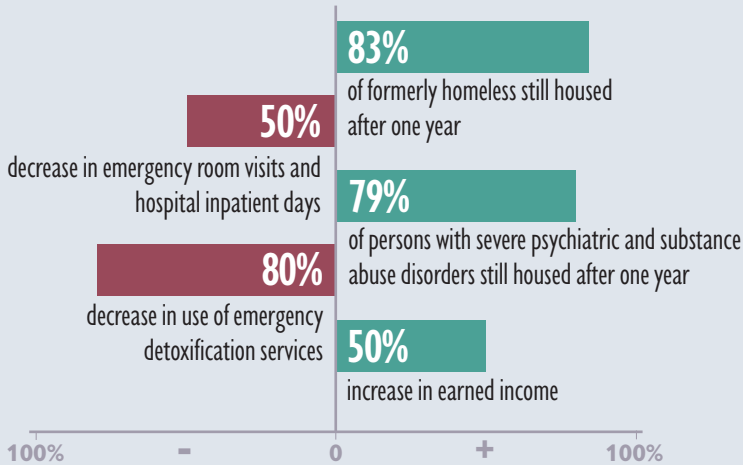
An endowment ensures that charitable dollars will continue to grow and be available to these agencies so that they can respond to the needs of our most vulnerable community members in perpetuity. Annual distributions are based on the endowment's market value.



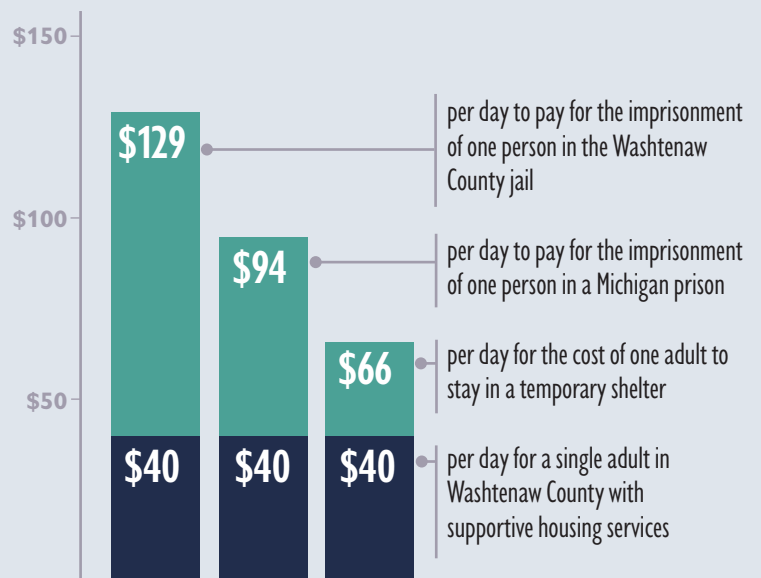
## SUPPORTIVE SERVICES IMPACTS

Studies have shown that permanent supportive housing provides more positive outcomes than programs that provide only shelter.

### EFFECTS OF PERMANENT SUPPORTIVE SERVICES:



## COST COMPARISON PER DAY TO HOUSE ONE PERSON:



## THE IMPACT OF YOUR GIFT

Gifts to the SYG Fund will make a lasting difference by helping our community's most vulnerable members maintain permanent housing and improve their lives. Our goal is to provide 500 households with supportive services in housing, in perpetuity.

By donating to the SYG Fund, your gift will be combined with gifts from hundreds of other community members and organizations, including St. Joseph Mercy Health System, which gave \$1 million to establish the SYG Fund endowment, and a \$1 million matching gift from the Ann Arbor Area Community Foundation (AAACF).



Sister Yvonne Gellise Fund  
for Permanent Supportive  
Housing Services

## SUPPORTIVE SERVICES

Supportive services, in addition to housing, have led to dramatic declines in homelessness in many cities and states.

### SUPPORTIVE SERVICES ARE:

- Flexible and support self-determination and individual accountability
- Designed to integrate individuals into the community and to progress their quality of life
- Coordinated by a case manager and include the following to maintain stable housing:
  - Primary care and mental health services
  - Substance abuse counseling
  - Employment or vocational training
  - Transportation
  - Problem solving and dispute resolution
  - Family-based interventions
  - Crisis management and stabilization